



ZYMO RESEARCH

The Beauty of Science is to Make Things Simple

INSTRUCTION MANUAL

ZR Genomic DNA™-Tissue MicroPrep

Catalog No. D3040 & D3041

Highlights

- For high quality DNA purification from small amounts of solid tissue (e.g., tailsnips, earpunches, adipose tissue, etc.), whole blood, plasma, serum, buffy coat, lymphocytes, cultured cells, FFPE tissues, semen, hair, and other biological sources.
- Combines Proteinase K digestion with innovative Zymo-Spin Technology.
- Isolated DNA is ideal for PCR, endonuclease digestion, Southern blotting, bisulfite conversion/methylation detection, sequencing, genotyping, etc.

Contents

Product Contents & Specifications.....	1
Product Description	2
General Considerations.....	3
Reagent Preparation.....	4
Protocols	
Solid Tissue.....	4
Whole Blood, Serum, and Plasma	5
Cell Monolayer.....	6
Biological Liquids/Cell Suspensions	7
Alternative Protocols	
Samples collected onto Storage Papers/Cards	8
Hair, Feathers, and FFPE Tissue.....	9
Troubleshooting.....	9
Ordering Information.....	10
Epigenetics-Related Products from Zymo.....	11

Satisfaction of all Zymo Research products is guaranteed. If you are not satisfied with this product please call 1-888-882-9682.

Product Contents

ZR Genomic DNA™-Tissue MicroPrep (Kit Size)	D3040 (50 Preps.)	D3041 (200 Preps.)	Storage Temperature
Proteinase K & Storage Buffer*	2 x 5 mg	2 x 20 mg	-20°C(after mixing)
2X Digestion Buffer**	5 ml	20 ml	Room Temp.
Genomic Lysis Buffer***	50 ml	2 x 100 ml	Room Temp.
DNA Pre-Wash Buffer**	15 ml	50 ml	Room Temp.
g-DNA Wash Buffer	50 ml	100 ml	Room Temp.
DNA Elution Buffer	10 ml	50 ml	Room Temp.
Zymo-Spin™ IC Columns	50 columns	200 columns	Room Temp.
Collection Tubes	100 tubes	400 tubes	Room Temp.
Instruction Manual	1	1	-

Note - Integrity of kit components is guaranteed for up to one year from date of purchase. Reagents are routinely tested on a lot-to-lot basis to ensure they provide maximal performance and reliability.

* The Proteinase K is stable as shipped. Add 260 µl (1,040 µl for D3041) **Proteinase K Storage Buffer** to the **Proteinase K** tube prior to use. The final concentration of **Proteinase K** after the addition of **Proteinase K Storage Buffer** is ~20 mg/ml.

** The **2X Digestion Buffer** and **DNA Pre-Wash Buffer** may have formed a precipitate. If this is the case, incubate at 37°C to solubilize.

*** Recommended: Add beta-mercaptoethanol to 0.5%(v/v) i.e., 250 µl per 50 ml or 500 µl per 100 ml.

Specifications

- **Sample Sources** – Solid tissues (e.g., tailsnips, earpunches, adipose tissue, etc.), whole blood, plasma, serum, buffy coat, lymphocytes, cultured cells, FFPE tissues, semen, hair, and other biological sources are effectively processed using this kit.
- **DNA Purity** – High quality DNA for PCR, endonuclease digestion, Southern blotting, bisulfite conversion/methylation detection, sequencing, genotyping, etc., is eluted with **DNA Elution Buffer** or water. ($A_{260}/A_{280} \geq 1.8$)
- **DNA Size** – Capable of recovering genomic and mitochondrial DNA sized fragments from 100 bp to ≥ 40 kb. If present, parasitic, microbial, and viral DNA will also be recovered. Typical fragment sizes range from 25 kb-35 kb.
- **DNA Yield** – The DNA binding capacity of the column is 5 µg. Typically, mammalian tissues yield: 1-3 µg DNA per mg skeletal, heart, and brain tissues and 3-5 µg DNA per mg liver, kidney and lung tissues. Human whole blood will yield 3-7 µg DNA per 100 µl blood sampled. DNA is eluted into ≥ 10 µl **DNA Elution Buffer** or water.
- **Product Detergent Tolerance** – $\leq 5\%$ Triton X-100, $\leq 5\%$ Tween-20, $\leq 5\%$ Sarkosyl, $\leq 0.1\%$ SDS.
- **Equipment** – Water bath or heat block (55°C), microcentrifuge, and vortex.

Note - ™ Trademarks of Zymo Research Corporation. This product is for research use only and should only be used by trained professionals. It is not intended for use in diagnostic procedures. Some reagents included with this kit are irritants. Wear protective gloves and eye protection. Follow the safety guidelines and rules enacted by your research institution or facility.

ZYMO RESEARCH CORP.

Phone: (949) 679-1190 ▪ Toll Free: (888) 882-9682 ▪ Fax: (949) 266-9452 ▪ info@zymoresearch.com ▪ www.zymoresearch.com

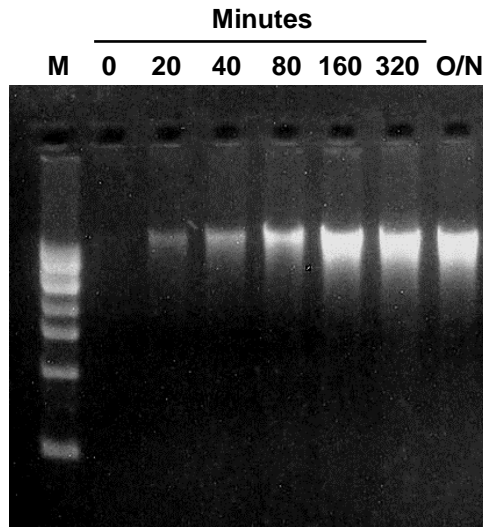
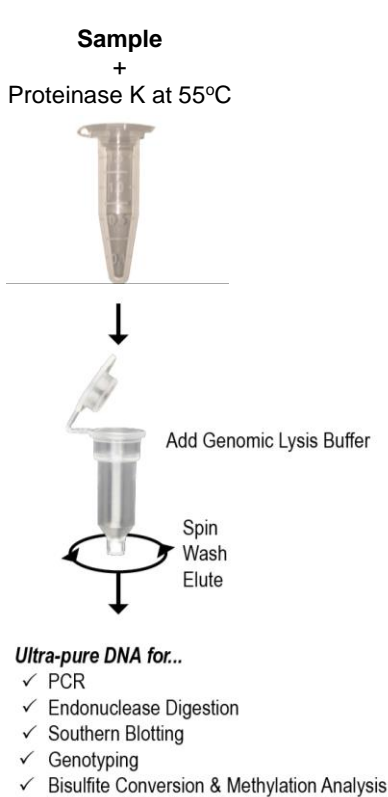
For purification of up to 25 µg DNA/prep, use the **ZR Genomic DNA™-Tissue MiniPrep** (D3050, D3051). For high throughput purification (96-well), use the **ZR-96 Genomic DNA™-Tissue Miniprep** (D3055, D3056, D3057).

Product Description

The **ZR Genomic DNA™-Tissue MicroPrep** is a simple procedure for the rapid isolation of total DNA (e.g., genomic, mitochondrial, parasitic, microbial, viral) from a variety of solid tissues that are either fresh, frozen, or FFPE. This product has been optimized for maximal recovery of ultra-pure DNA without RNA contamination and is also compatible with buffy coat, bone marrow, cells from culture, whole blood (fresh or stored), serum, plasma, and many biological liquid samples. For processing, simply digest the sample with the supplied **Proteinase K** then add the **Genomic Lysis Buffer**, vortex, and transfer the mixture to the supplied Zymo-Spin™ column/filter assembly. PCR inhibitors are effectively removed during the purification process and purified DNA is suitable for downstream applications including: PCR, Southern blotting, DNA sequencing, endonuclease digestion, bisulfite conversion/methylation analysis, etc.

Zymo Research offers the following for rapid, precise DNA methylation detection...

- 1.) **EZ DNA Methylation™ Kit** (D5001, D5002, D5003)
- 2.) **EZ DNA Methylation-Gold™ Kit** (D5005, D5006, D5007, D5008)
- 3.) **EZ DNA Methylation-Direct™ Kit** (D5020, D5021, D5022, D5023)



High yield/quality DNA is successfully isolated from porcine muscle using the **ZR Genomic DNA™-Tissue MiniPrep**. Equivalent amounts (25 mg) of muscle tissue were processed using the **ZR Genomic DNA™-Tissue MiniPrep** after incubation with Proteinase K at 55°C for the indicated times (in minutes) or overnight (O/N). Equal volumes of eluted DNA were then analyzed in a 0.8% (w/v) TAE/agarose/ethidium bromide gel. The size marker "M" is a 1 kb ladder (Zymo Research).

Please visit:

www.zymoresearch.com

for a comprehensive list of genomic DNA purification products.

General Considerations When Purifying Genomic DNA

Zymo Research offers a range of genomic DNA isolation kits that are suitable for extracting high molecular weight DNA from a wide variety of sample types. Kits are tailor-made for specific applications and feature chemical, Proteinase K, and/or mechanical lysis technologies depending on the starting material (see table below).

DNA Extraction Method	Applications
Chemical	<i>Soft tissue samples</i> from humans, mice, etc., including: whole blood, plasma, serum, cells, buffy coat, buccal cells, biological liquids, crude homogenates, etc.
Proteinase K & Chemical	<i>Solid tissue samples</i> from humans, mice, etc., including: tailsnips, earpunches, hair*, feathers*, and FFPE* samples, as well as all of the above.
Mechanical Homogenization & Chemical	<i>Tough tissues and organisms</i> including: insects, arthropods, fungi, gram (+/-) bacteria, and microorganisms in soil, sludge, feces, or water, as well as most of the above.

The **ZR Genomic DNA™-Tissue MicroPrep** includes Proteinase K digestion and chemical lysis for the rapid, efficient purification of DNA (up to 5 µg/prep.) from soft and solid tissues, cells, and a range of biological liquids (see table below for sample types and protocol recommendations).

Recommended Protocol	Sample Types
Solid Tissue	<i>Solid tissue samples</i> from humans, mice, etc., including: tailsnips, earpunches, hair*, feathers*, and FFPE* samples. (pg. 4)
Whole Blood, Serum, and Plasma	Whole blood, plasma, and serum. (pg. 5)
Cell Monolayer	Monolayer cells ($\leq 1 \times 10^6$) from culture. (pgs. 6)
Biological Liquids and Cell Suspensions	Biological liquids including: semen, CSF, buffy coat, body fluids. Cell suspensions containing less than 1×10^6 cells (e.g., buffy coat, suspension cultured cells, etc.) (pg. 7)

* With protocol modification. See Alternative Protocols **(pg. 8.)**

Starting Material: The quality of the sampled material will affect both the yield and quality of the purified DNA. Freshly sampled tissues and cells yield the highest quantity/quality DNA. If sampling from “stored” sources and/or if samples have been subject to repeated freeze/thawing, yields may decrease and the purified DNA may be degraded (e.g., FFPE).

Removal of PCR Inhibitors: The **ZR Genomic DNA™-Tissue MicroPrep** has been designed for the efficient removal of PCR inhibitors during DNA purification from the samples listed in the tables above. However, some environmental samples including soil, plants, and manure (feces) will require alternative technologies (see sidebar) for the effective removal of polyphenolic PCR inhibitors.

Storage of Purified DNA: The eluted DNA can be used immediately for molecular-based applications or stored $\leq -20^\circ\text{C}$.

The **ZR Soil Microbe DNA MiniPrep™** (D6001), **ZR Fecal DNA MiniPrep™** (D6010), and **ZR Plant/Seed DNA MiniPrep™** (D6020) can be used for the purification of inhibitor-free DNA from soil, feces, and plants, respectively.

ZYMO RESEARCH CORP.

Reagent Preparation

- ✓ Add 260 µl (1,040 µl for D3041) **Proteinase K Storage Buffer** to the 5 mg **Proteinase K** tube prior to use. The final concentration of Proteinase K after the addition of Proteinase K Storage Buffer is ~20 mg/ml.
- ✓ Recommended: Add beta-mercaptoethanol (user supplied) to the **Genomic Lysis Buffer** to a final dilution of 0.5%(v/v) i.e., 250 µl per 50 ml or 500 µl per 100 ml.

Protocols

Solid Tissue – Including: tailsnips, earpunches, biopsies, etc.

The following is for the purification of DNA from up to 5 mg fresh or frozen tissue. Typical yields are: 1-3 µg DNA per mg skeletal, heart, and brain tissues and 3-5 µg DNA per mg liver, kidney, and lung tissues. For hair, feathers and FFPE tissues follow **Alternative Protocols I** and **II** on page 8, respectively.

1. To a tissue sample (≤5 mg) in a microcentrifuge tube and add a solution of...

H ₂ O	95 µl
2X Digestion Buffer	95 µl
Proteinase K	10 µl

2. Mix and then incubate the tube at 55°C for 1-3 hours.

Note: If required (e.g. FFPE samples), digesting samples overnight at 55°C with Proteinase K is possible without affecting the integrity of the DNA.

3. Add 700 µl **Genomic Lysis Buffer** to the tube and mix thoroughly by vortexing. Centrifuge at 10,000 x g for one minute to remove insoluble debris.
4. Transfer the supernatant to a **Zymo-Spin™ IC Column** in a **Collection Tube**. Centrifuge at 10,000 x g for one minute.
5. Add 200 µl of **DNA Pre-Wash Buffer** to the spin column in a new **Collection Tube**. Centrifuge at 10,000 x g for one minute.
6. Add 400 µl of **g-DNA Wash Buffer** to the spin column. Centrifuge at 10,000 x g for one minute.
7. Transfer the spin column to a clean microcentrifuge tube. Add ≥10 µl **DNA Elution Buffer** or water (e.g., add 40 µl if sampling 5 mg tissue) to the spin column. Incubate 2-5 minutes at room temperature, then centrifuge at top speed for 30 seconds to elute the DNA. The eluted DNA can be used immediately for molecular based applications or stored ≤-20°C for future use.

For **Technical Assistance**, please contact 1-888-882-9682 or E-mail tech@zymoresearch.com.

Incubate 12-16 hours for formalin-fixed deparaffinized samples.

The column capacity is ~800 µl.

Elution of DNA from the column is dependent on pH and temperature. If water is used, ensure the pH is >6.0. Also, the total yield may be improved by eluting the DNA with Elution Buffer or water pre-equilibrated to 60-70°C or by performing and pooling sequential elutions.

Human whole blood should yield between 3-7 µg DNA per 100 µl.

The column capacity is ~800 µl.

Elution of DNA from the column is dependent on pH and temperature. If water is used, ensure the pH is >6.0. Also, the total yield may be improved by eluting the DNA with Elution Buffer or water pre-equilibrated to 60-70°C or by performing and pooling sequential elutions.

Whole Blood, Serum and Plasma

The following is for the purification of DNA from up to 50 µl whole blood, serum or plasma (the volumes can be adjusted depending on your requirements). Fresh, frozen, or preserved blood (in EDTA, citrate, or heparin) can be used.

1. Adjust total volume of sample (blood, serum, or plasma) to 100 µl with water in a microcentrifuge tube and then add the following...

2X Digestion Buffer	95 µl
Proteinase K	5 µl

Example: Add 60 µl H₂O to 40 µl blood, serum, or plasma prior to adding the 2X Digestion Buffer and Proteinase K.

2. Mix and then incubate the tube at 55°C for 20 minutes.
3. Add 700 µl **Genomic Lysis Buffer** to the tube and mix thoroughly by vortexing.
4. Transfer the supernatant to a **Zymo-Spin™ IC Column** in a **Collection Tube**. Centrifuge at 10,000 x g for one minute.
5. Add 200 µl of **DNA Pre-Wash Buffer** to the spin column in a new **Collection Tube**. Centrifuge at 10,000 x g for one minute.
6. Add 400 µl of **g-DNA Wash Buffer** to the spin column. Centrifuge at 10,000 x g for one minute.
7. Transfer the spin column to a clean microcentrifuge tube. Add ≥10 µl **DNA Elution Buffer** or water (e.g., add 50 µl if sampling 50 µl blood) to the spin column. Incubate 2-5 minutes at room temperature, then centrifuge at top speed for 30 seconds to elute the DNA. The eluted DNA can be used immediately for molecular based applications or stored ≤-20°C for future use.

Cell Monolayer

The following procedure is designed for up to 1×10^6 monolayer cells. Although cell types and culture conditions may vary, the protocol will work with high-density growth cells (e.g., HeLa cells) as well as with low-density growth cells (e.g., neuronal cells). The table (below) is provided as a reference for estimating cell numbers.

1. Trypsinize or scrape adherent cells from a culture flask or plate. Centrifuge the suspension at approximately $500 \times g$ for 5 minutes. Remove the supernatant and resuspend the cell pellet in 1 ml PBS (Phosphate Buffered Saline) and then transfer suspension to a centrifuge tube. Centrifuge the suspension at approximately $500 \times g$ for 5 minutes. Remove the supernatant and resuspend the pellet in a solution of...

H ₂ O	95 μ l
2X Digestion Buffer	95 μ l
Proteinase K	5 μ l

2. Incubate the tube at 55°C for 20 minutes.
3. Add 700 μ l **Genomic Lysis Buffer** to the tube and mix thoroughly by vortexing. Centrifuge at $10,000 \times g$ for one minute to remove insoluble debris.
4. Transfer the supernatant to a **Zymo-Spin™ IC Column** in a **Collection Tube**. Centrifuge at $10,000 \times g$ for one minute.
5. Add 200 μ l of **DNA Pre-Wash Buffer** to the spin column in a new **Collection Tube**. Centrifuge at $10,000 \times g$ for one minute.
6. Add 400 μ l of **g-DNA Wash Buffer** to the spin column. Centrifuge at $10,000 \times g$ for one minute.
7. Transfer the spin column to a clean microcentrifuge tube. Add $\geq 10 \mu$ l **DNA Elution Buffer** or water (e.g., add 40 μ l if sampling 1×10^6 cells) to the spin column. Incubate 2-5 minutes at room temperature, then centrifuge at top speed for 30 seconds to elute the DNA. The eluted DNA can be used immediately for molecular based applications or stored $\leq -20^\circ\text{C}$ for future use

Guidelines for Monolayer Cell DNA Isolation: Cell numbers (growth densities) can vary between different cell types. The table (below) provides an approximation of the cell numbers that can be recovered from different culture containers for “high-density” growth cells like CV1 and HeLa cells.

Culture Plate/Flask Growth Area (cm²) and Cell Number

Culture Container	Well/Flask Surface Area	Cell Number
96-well plate	0.32-0.6 cm ²	$4-5 \times 10^4$
24-well plate	2 cm ²	$1-3 \times 10^5$
12-well plate	4 cm ²	$4-5 \times 10^5$
6-well plate	9.5 cm ²	$0.5-1 \times 10^6$
T25 Culture Flask	25 cm ²	$2-3 \times 10^6$
T75 Culture Flask	75 cm ²	$0.6-1 \times 10^7$
T175 Culture Flask	175 cm ²	$2-3 \times 10^7$

Generally, no more than 1×10^6 cells should be sampled, for larger samples will exceed the binding capacity of the spin column.

The column capacity is ~800 μ l.

Elution of DNA from the column is dependent on pH and temperature. If water is used, ensure the pH is >6.0 . Also, the total yield may be improved by eluting the DNA with Elution Buffer or water pre-equilibrated to $60-70^\circ\text{C}$ or by performing and pooling sequential elutions.

Biological Liquids and Cell Suspensions

Cells should be processed directly from biological fluids or from suspension in PBS, TE, or compatible buffers.

The following protocol is designed for up to 20 μl of biological liquid sample including semen, CSF, buffy coat, body fluids, and cell suspensions containing less than 1×10^6 cells.

1. Adjust total volume of liquid sample to 100 μl with water in a microcentrifuge tube and then add the following...

2X Digestion Buffer	95 μl
Proteinase K	5 μl

2. Mix and then incubate the tube at 55°C for 20 minutes.
3. Add 700 μl **Genomic Lysis Buffer** to the tube and mix thoroughly by vortexing.
4. Transfer the mixture to a **Zymo-Spin™ IC Column** in a **Collection Tube**. Centrifuge at 10,000 x g for one minute.
5. Add 200 μl of **DNA Pre-Wash Buffer** to the spin column in a new **Collection Tube**. Centrifuge at 10,000 x g for one minute.
6. Add 400 μl of **g-DNA Wash Buffer** to the spin column. Centrifuge at 10,000 x g for one minute.
7. Transfer the spin column to a clean microcentrifuge tube. Add ≥ 10 μl **DNA Elution Buffer** or water (e.g., add 40 μl if sampling liquids containing 1×10^6 cells) to the spin column. Incubate 2-5 minutes at room temperature, then centrifuge at top speed for 30 seconds to elute the DNA. The eluted DNA can be used immediately for molecular based applications or stored $\leq -20^\circ\text{C}$ for future use.

The column capacity is ~800 μl .

Elution of DNA from the column is dependent on pH and temperature. If water is used, ensure the pH is >6.0 . Also, the total yield may be improved by eluting the DNA with Elution Buffer or water pre-equilibrated to 60-70°C or by performing and pooling sequential elutions.

Alternative Protocols:

I.) For Samples Collected onto Storage Papers/Cards: Rapid purification of inhibitor-free, PCR-quality DNA from blood, saliva, and cells collected onto Guthrie, FTA®, and other storage papers/cards.

1. Add card samples (punches) to a **ZR BashingBead™ Lysis Tube (2.0 mm)**¹. Add 400 µl **Lysis Solution**² to the tube.
2. Secure lysis tube in a bead beater fitted with a 2 ml tube holder assembly and process at maximum speed.

***Note:** Required processing time will vary depending on the device and application and therefore should be evaluated on a case by case basis.*

For example, processing times may be as little as 3 minutes when using high-speed cell disrupters (e.g., the portable TerraLyzer™ Sample Processor, FastPrep® -24, or similar) or as long as 20 minutes when using lower speeds (e.g., Disruptor Genie™, or standard benchtop vortexes). See manufacturer's literature for operating information.

3. Centrifuge the ZR BashingBead™ Lysis Tube (2.0 mm) for one minute.
4. To the lysate in the ZR BashingBead™ Lysis Tube (2.0 mm), add:

Proteinase K	10 µl
2X Digestion Buffer	390 µl

5. Mix and then incubate the tube at 55°C for 20 minutes.
6. Centrifuge the ZR BashingBead™ Lysis Tube (2.0 mm) for one minute. Transfer 400 µl supernatant to a tube that can hold up to 2 ml.
7. Add 1,200 µl **Genomic Lysis Buffer** to the tube and mix thoroughly.
8. Transfer 800 µl of the supernatant to a **Zymo-Spin IC** Column in a Collection Tube. Centrifuge at 10,000 x g for one minute. Discard the flow through.
9. Repeat Step 8 and discard the Collection Tube.
10. Add 200 µl of **DNA Pre-Wash Buffer** to the spin column in a new Collection Tube. Centrifuge at 10,000 x g for one minute.
11. Add 500 µl of **g-DNA Wash Buffer** to the spin column and centrifuge at 10,000 x g for one minute.
12. Transfer the spin column to a clean microcentrifuge tube. Add ≥10 µl **DNA Elution Buffer** or water (e.g., add 200 µl if sampling 5x10⁶ cells) to the spin column. Incubate 2-5 minutes at room temperature, then centrifuge at top speed for 30 seconds to elute the DNA. The eluted DNA can be used immediately for molecular based applications or stored ≤-20°C for future use.

¹ZR BashingBead Lysis Tube (2.0 mm) [Catalog No. S6003-50], purchased separately.

²Lysis Solution (Catalog No. S6001-3-40), purchased separately.

Alternative Protocols:

I.) For Hair, Feathers, or Related Samples: Freshly prepared DTT (dithiothreitol) (not provided) needs to be added to Step 1 of the Solid Tissue Protocol (page 3) as follows...

H ₂ O	90 µl
2x Digestion Buffer	90 µl
DTT (1 M)	10 µl
Proteinase K	10 µl

Then follow with the rest of the procedure as indicated.

II.) For FFPE Samples: Tissues need to be deparaffinized prior to Step 1 of the Solid Tissue Protocol (page 4) by...

- i. Removing (trimming) as much paraffin from the sample(s) as possible.
- ii. Transfer samples to centrifuge tubes. Add 750 µl xylene (not provided) to the samples.
- iii. Vortex and incubate samples at room temperature for 1 hour with gentle rocking.
- iv. Centrifuge for 1 minutes at 10,000 x g and remove the xylene from the sample. Repeat steps 2-4.
- v. Wash two times with 1 ml EtOH (100%) for 5 minutes with gentle rocking.
- vi. Wash two times with 1 ml EtOH (95%) for 5 minutes with gentle rocking.
- vii. Wash two times with 1 ml EtOH (75%) for 5 minutes with gentle rocking.
- viii. Wash once with 1 ml ddH₂O for 5 minutes with gentle rocking. Remove as much water from the sample as possible
- ix. Use sample or store at -80°C.

Note: For steps v-viii, add the wash, vortex briefly, and incubate for 5 minutes with gentle rocking. Remove wash from the sample after centrifugation at 1,000 x g for 5 minutes.

Troubleshooting:

1. DNA degradation: Check for DNase contamination. All reagents and components supplied with the **ZR Genomic DNA™-Tissue MicroPrep** are DNase-free. However, DNase contamination can result during the processing of some samples. Check pipets, pipet tips, microcentrifuge tubes, etc., and exercise the appropriate precautions during the DNA purification procedure. Make sure Proteinase K digestions are performed at 55°C as indicated.
2. DNA is not performing well in subsequent experiments: Ensure the correct volume of **Genomic Lysis Buffer** has been added to the sample. Also, make sure all centrifugation steps are completed for the indicated times and speeds (rcfs). Failure to do so may result in incomplete washing, which may cause salts to be eluted with the DNA affecting quantitation and subsequent experiments including enzymatic processes like PCR.
3. RNA contamination: The buffers and spin columns provided in this kit are designed to efficiently remove RNA during the DNA purification procedure. However, additional RNA removal (e.g., digestion with RNase A) may be necessary for subsequent applications sensitive to trace amounts of RNA.

Ordering Information

Product Description	Catalog No.	Kit Size
ZR Genomic DNA™-Tissue MicroPrep	D3040	50 preps.
	D3041	200 preps.
ZR Genomic DNA™-Tissue MiniPrep	D3050	50 preps.
	D3051	200 preps.
ZR-96 Genomic DNA™-Tissue MiniPrep	D3055	2x96 preps.
	D3056	4x96 preps.
	D3057	10x96 preps.

For Individual Sale	Catalog No.	Amount
Proteinase K & Storage Buffer	D3001-2-5	5 mg set
	D3001-2-20	20 mg set
2X Digestion Buffer	D3050-1-5	5 ml
	D3050-1-20	20 ml
Genomic Lysis Buffer	D3004-1-50	50 ml
	D3004-1-100	100 ml
DNA Pre-Wash Buffer	D3004-5-15	15 ml
	D3004-5-30	30 ml
	D3004-5-50	50 ml
g-DNA Wash Buffer	D3004-2-50	50 ml
	D3004-2-100	100 ml
DNA Elution Buffer	D3004-4-4	4 ml
	D3004-4-10	10 ml
	D3004-4-50	50 ml
ZR BashingBead™ Lysis Tubes (2.0 mm)	S6003-50	50 tubes
Zymo-Spin™ IC Columns	C1004-50	50 columns
	C1004-250	250 columns
Collection Tubes	C1001-50	50 tubes
	C1001-500	500 tubes
	C1001-1000	1,000 tubes

ZYMO RESEARCH CORP.

Popular Products From Zymo Research

Product	Description	Kit Size (Preps)	Catalog No. (Format)
Fragment DNA Purification			
DNA Clean & Concentrator™-5	Clean and concentrate up to 5µg DNA into ≥6 µl elution volume in as little as 2 minutes with no wash residue carryover.	50 200 50 200	D4003 (uncapped) D4004 (uncapped) D4013 (capped) D4014 (capped)
DNA Clean & Concentrator™-25	Clean & concentrate 25 µg of DNA into ≥25 µl elution volume in as little as 2 minutes with no wash residue carryover.	50 200 50 200	D4005 (uncapped) D4006 (uncapped) D4033 (capped) D4034 (capped)
ZR-96 DNA Clean & Concentrator™-5	Quick (15 minute), high-output recovery of up to 5 µg pure DNA into 10-15 µl minimum elution volume allows for highly concentrated DNA.	2x96 4x96	D4023 D4024
Genomic DNA Clean & Concentrator™	Quick (5 minute) clean-up of up to 10 µg high molecular weight DNA (≤200 kb) from any enzymatic reaction or impure preparation without precipitations.	25 100	D4010 (capped) D4011 (capped)
Zymoclean™ Gel DNA Recovery Kit	Purify DNA from high and low-melting agarose gels in minutes	50 200 50 200	D4001 (uncapped) D4002 (uncapped) D4007 (capped) D4008 (capped)
ZR-96 Zymoclean™ Gel DNA Recovery Kit	High-throughput DNA purification from high and low-melting agarose gels.	2x96 4x96	D4021 D4022
Zymoclean™ Large Fragment DNA Recovery Kit	Purify high molecular weight DNA (≤200 kb) from high and low-melting agarose gels in minutes	25 100	D4045 (capped) D4046 (capped)
OneStep™ PCR Inhibitor Removal Kit	Fast, one step procedure for removal of PCR inhibitors such as polyphenolics, humic/fulvic acids, melanin, etc. for successful PCR and other downstream applications.	50 2x96	D6030 D6035
Plasmid DNA Purification			
Zyppy™ Plasmid Miniprep Kit	Pellet-Free™ plasmid DNA purification in less than 10 minutes. Recover up to 25 µg DNA in as low as 30 µl.	50 100 400	D4036 D4019 D4020
Zyppy™-96 Plasmid Miniprep	The fastest and simplest high-throughput method for plasmid purification.	2x96 4x96 8x96	D4041 D4042 D4043
Zyppy™ Plasmid Midiprep Kit	Pellet-Free™ plasmid DNA purification in 15 minutes in a 150 µl minimum elution volume).	25 50	D4025 D4026
ZR Plasmid MiniPrep™ Classic	Plasmid DNA purification in minutes: (alkaline lysis/spin column format for low 30 µl elution volume).	50 100 400	D4036 D4019 D4020
Genomic DNA Purification			
Quick-gDNA™ MiniPrep	Easy purification of genomic DNA from whole blood, plasma, serum, body fluids, buffy coat, lymphocytes, tissue, swabs or cultured cells in as little as 15 minutes <u>without</u> the use of Proteinase K or organic denaturants.	50 200	D3024 D3025
ZR-96 Quick-gDNA™	Simple, high throughput (96-well) purification of DNA from whole blood, plasma, serum, body fluids, buffy coat, lymphocytes, tissue, swabs, or cultured cells in about 30 minutes.	2x96 4x96 10x96.	D3010 D3011 D3012
ZR-Genomic DNA™-Tissue MiniPrep	For high quality DNA purification from <u>solid tissues</u> (e.g., tail snips, ear punches, adipose tissue, etc.), body fluids, cultured cells, buccal cells, FFPE tissues, hair, and other biological sources using Proteinase K and Fast.	50 200	D3050 D3051
Environmental DNA Purification Kits	Unique BashingBead™ technology allows isolation of DNA from samples refractory to conventional lysis procedures including tough-to-lyse tissues, soil samples, feces, plants, seeds, insects, bacteria, yeast, filamentous fungi, unicellular and filamentous algae, and protozoa		Visit website for a comprehensive list

Please visit our website to see our complete line-up of products.

ZYMO RESEARCH CORP.